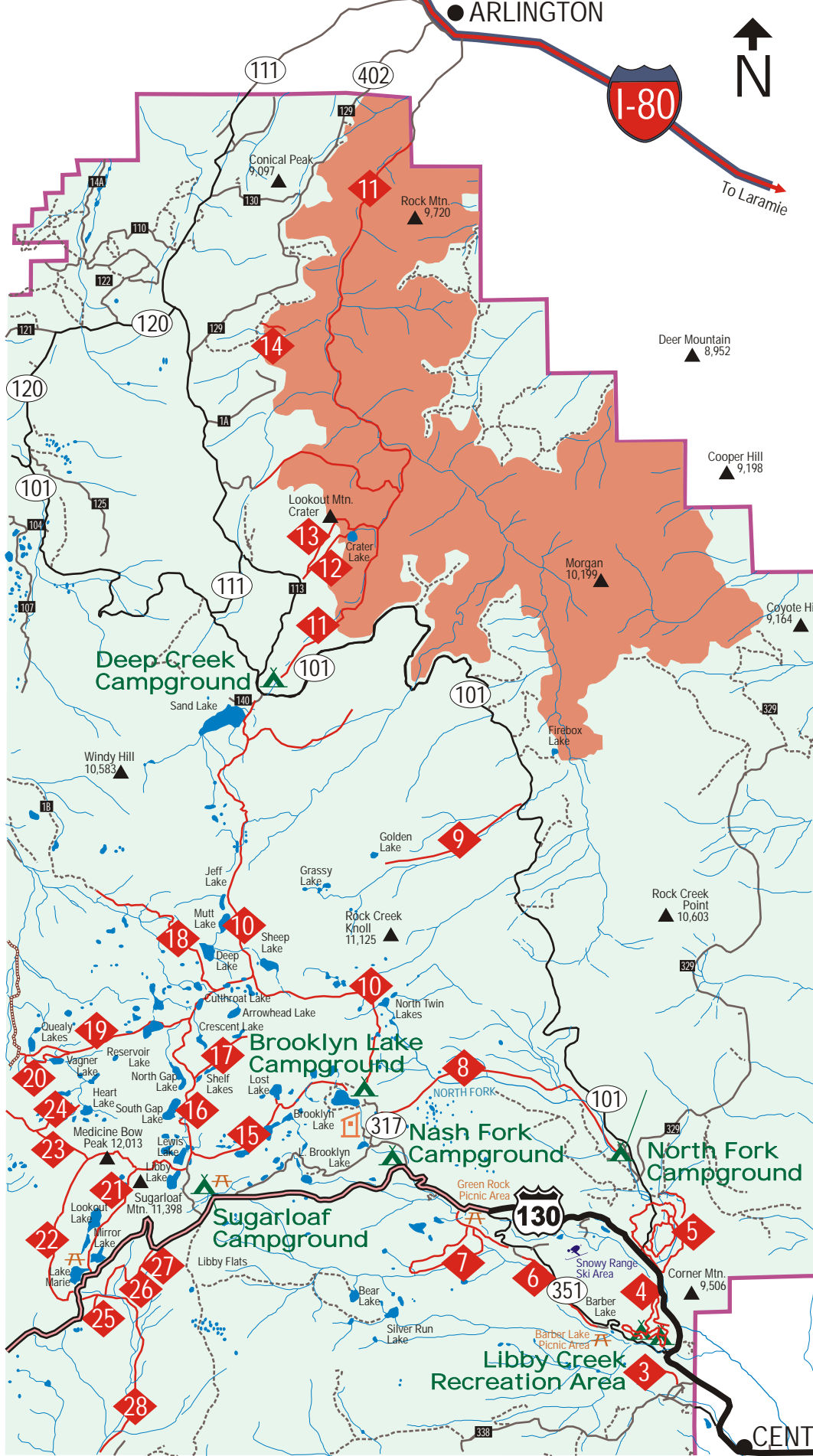


TOP RIGHT



Snowy Range Campgrounds	# of Sites	Elevation	RV Length Limit	Hiking trail	Fishing	Boating	Drinking water	Restrooms	Use fee
SUGARLOAF (Reservable)	16	10,700'	22'		•	•	•	•	\$10
BROOKLYN LAKE (Reservable)	19	10,500'	22'		•	•	•	•	\$10
NASH FORK	27	10,200'	22'		•			•	\$10
NORTH FORK (Reservable)	60	8,600'	30'		•	•	•	•	\$10
DEEP CREEK	12	10,200'	22'		•			•	\$10
LIBBY CREEK	8	8,600'	22'		•	•	•	•	\$10
ASPEN	6	8,600'	16'		•	•	•	•	\$10
PINE	8	8,600'	16'		•	•	•	•	\$10
SPRUCE	8	8,600'	16'		•	•	•	•	\$10
WILLOW (Reservable)	16	8,600'	22'		•	•	•	•	\$10

Snowy Range Hiking Trails		Distance (miles) One-way	Elevation	Gain	Mountain Biking	Horseback Riding	Difficulty Level*
3	Centennial	0.2	8,500'	50'			E
4	Corner Mountain	7.0	9,100'	300'			M
5	Little Laramie	7.0	9,200'	300'	•	•	M
6	Barber Lake	3.0	9,600'	1,000'			M
7	Libby Creek	4.0	9,600'	900'			M
8	North Fork	5.0	9,900'	1,300'			D
9	Trail Creek	3.0	10,000'	900'			D
10	Sheep Lake	7.8	10,600'	1,300'	•	•	M
11	Rock Creek	11.14	8,300'	1,000'	•	•	M
12	Crater Lake	2.0	9,300'	200'			D
13	Lookout Mountain	1.0	10,000'	240'	•		M
14	Stud Creek	1.0	8,800'	400'			M
15	Lost Glacier Lakes	1.8	10,800'	200'			M
16	North Gap	2.3	11,000'	700'			D
17	Shelf Lakes	1.1	10,950'	120'			M
18	Deep Lake	1.77	10,500'	200'	•		M
19	Quealy Lake	4.1	10,500'	100'	•	•	M
20	Vagner Lake	0.5	10,500'	100'	•		M
21	Lakes	1.77	10,700'	900'			E
22	Medicine Bow Peak	5.33	11,200'	1,600'			D
23	Dipper Lake	3.4	10,800'	1,400'	•		D
24	Heart Lake	0.3	11,000'	200'	•		M
25	Lake Marie Falls	0.24	10,430'	40'			E
26	Tipple	4.0	10,500'	440'	•		M
27	Miner's Cabin	0.7	10,900'	500'			E
28	French Creek Canyon	5.33	9,580'	1,520'	•		M

*E=Easy; M=Moderate; D=Difficult

SYMBOLS

- Recommended Wilderness Area
- Interstate 80
- Snowy Range Scenic Byway (typically open June-October)
- Maintained Roads
- 4WD Gravel or Dirt Road
- Forest Boundary
- Hiking Trail
- ORV Permit Trails