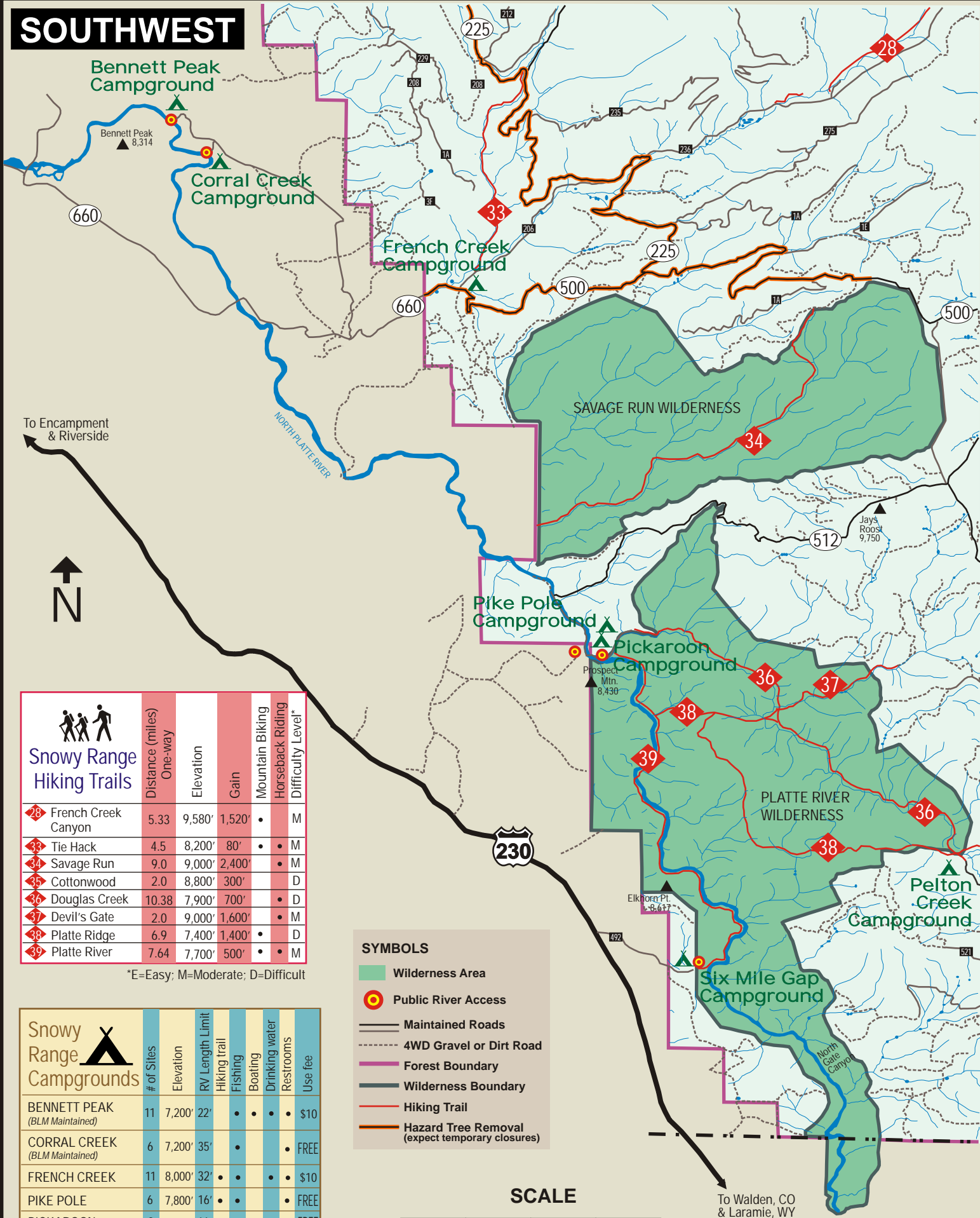


SOUTHWEST



Snowy Range Hiking Trails		Distance (miles) One-way	Elevation	Gain	Mountain Biking	Horseback Riding	Difficulty Level*
28	French Creek Canyon	5.33	9,580'	1,520'	•	•	M
33	Tie Hack	4.5	8,200'	80'	•	•	M
34	Savage Run	9.0	9,000'	2,400'	•	•	M
45	Cottonwood	2.0	8,800'	300'	•	•	D
36	Douglas Creek	10.38	7,900'	700'	•	•	D
37	Devil's Gate	2.0	9,000'	1,600'	•	•	M
38	Platte Ridge	6.9	7,400'	1,400'	•	•	D
39	Platte River	7.64	7,700'	500'	•	•	M

*E=Easy; M=Moderate; D=Difficult

Snowy Range Campgrounds		# of Sites	Elevation	RV Length Limit	Hiking trail	Fishing	Boating	Drinking water	Restrooms	Use fee
BENNETT PEAK	(BLM Maintained)	11	7,200'	22'	•	•	•	•	•	\$10
CORRAL CREEK	(BLM Maintained)	6	7,200'	35'	•	•	•	•	•	FREE
FRENCH CREEK		11	8,000'	32'	•	•	•	•	•	\$10
PIKE POLE		6	7,800'	16'	•	•	•	•	•	FREE
PICKAROON		8	7,800'	16'	•	•	•	•	•	FREE
PELTON CREEK	♿	15	8,100'	16'	•	•	•	•	•	\$10
SIX MILE GAP		9	8,000'	32'	•	•	•	•	•	\$10

SYMBOLS

- Wilderness Area
- Public River Access
- Maintained Roads
- 4WD Gravel or Dirt Road
- Forest Boundary
- Wilderness Boundary
- Hiking Trail
- Hazard Tree Removal (expect temporary closures)

