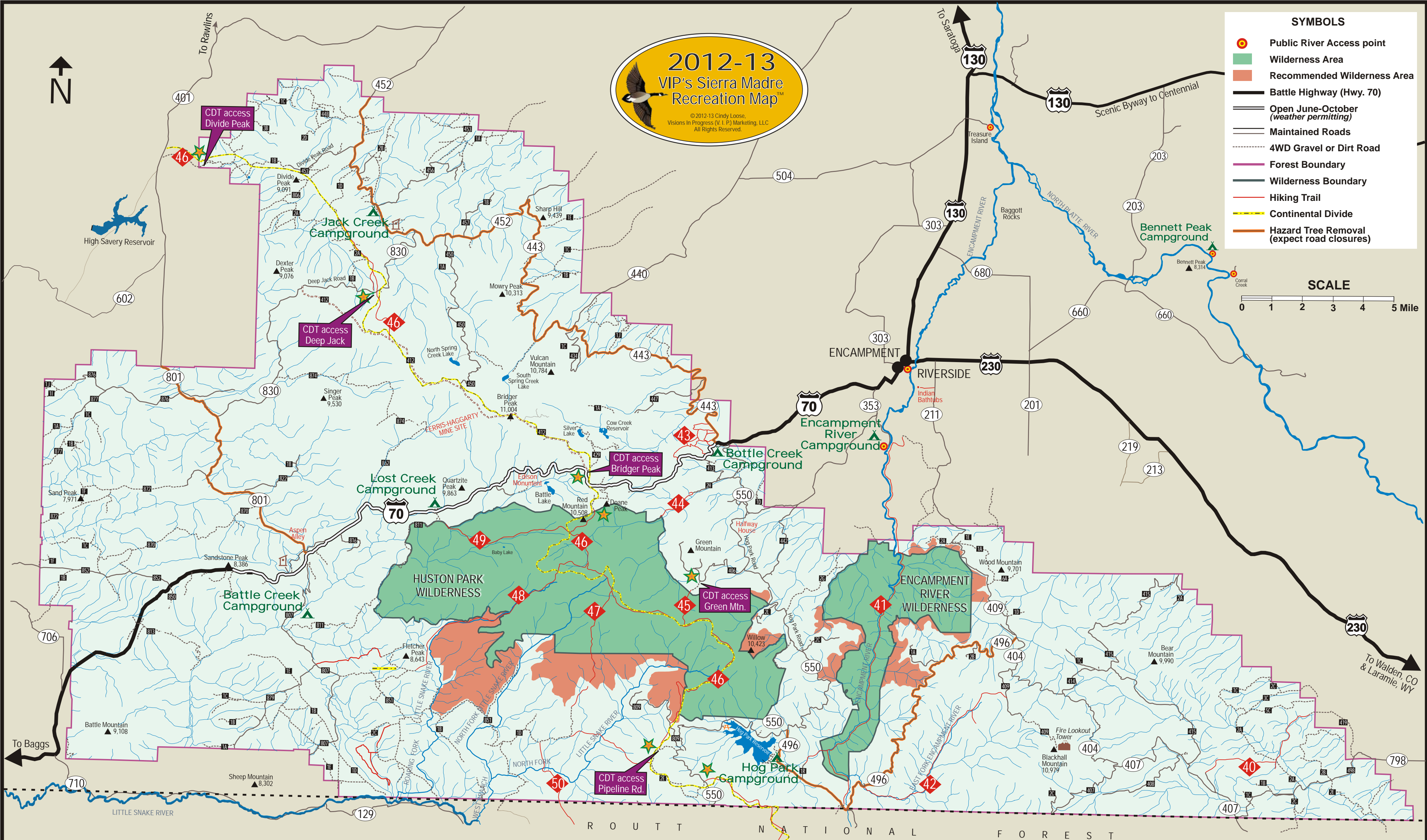
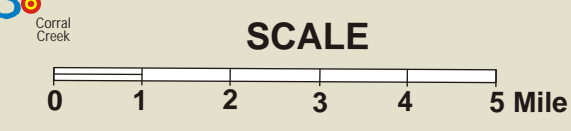


**2012-13**  
**VIP's Sierra Madre**  
**Recreation Map™**

© 2012-13 Cindy Loose,  
 Visions In Progress (V.I.P.) Marketing, LLC  
 All Rights Reserved.

- SYMBOLS**
- Public River Access point
  - Wilderness Area
  - Recommended Wilderness Area
  - Battle Highway (Hwy. 70)
  - Open June-October (weather permitting)
  - Maintained Roads
  - 4WD Gravel or Dirt Road
  - Forest Boundary
  - Wilderness Boundary
  - Hiking Trail
  - Continental Divide
  - Hazard Tree Removal (expect road closures)



To Baggs

To Saratoga

To Walden, CO & Laramie, WY

R O U T T N A T I O N A L F O R E S T